

**Foras Centrifugal pump cast
iron DN65 x 65 mm x DN40 x 40
mm DIN flange 10bar 16,8A
400/690VAC blue type MN40
200 A (0920304)**



FORAS
WATER PUMPS

TECHNICAL SPECIFICATIONS

Colour blue

Material cast iron

Material impeller 1 cast iron

Connection DIN flange

Voltage 400/690VAC

Max. temperature 90 °C

Minimum medium temperature -10 °C
(continuous)

Maximum ambient temperature 40 °C

Minimum ambient temperature 0 °C

Type MN40 200 A

Output Power 10 HP

Max. head 56,4 m

Size DN65 x 65 mm x DN40 x 40 mm

Seal type H

Length 590 mm

Width 273 mm

Weight 81 kg

Power 7.5 kW

Height 340 mm

Max flow rate 42 m³/h

BEP Capacity 34

BEP Head 48

Efficiency 57 %

Press 40

Suction 65

Packaging dimensions L/W/H 627 x 287 x 408 mm

DIMENSIONS

Cb-1 160 mm

Cl-1 100 mm

Ct-1 180 mm

G-1 212 mm

H 340 mm

H 340 mm

L 590 mm

Mc 70 mm

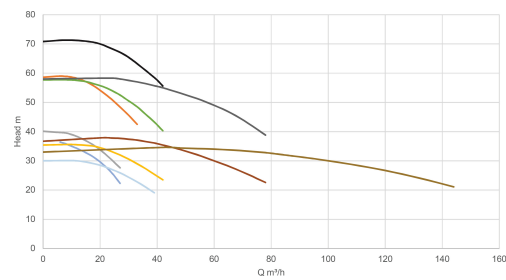
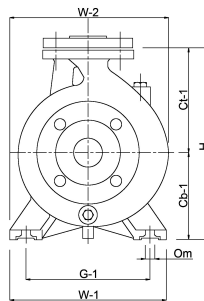
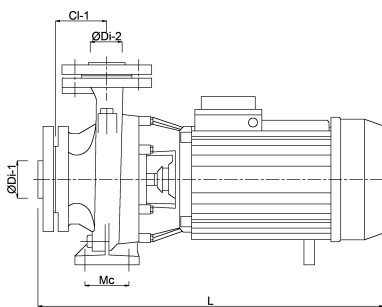
O 14 mm

W-1 265 mm

W-2 273 mm

ØDi-1 65 mm

ØDi-2 40 mm



— 920290
— 920293
— 920291
— 920301
— 920300
— 920304
— 920307
— 920309
— 920311
— 920314

PRODUCT INFORMATION

The pumps are supplied complete with counter flanges with female thread.
Mechanical seal.
Maximum water temperature 90°C.

Last modified date: 19/05/2026

Bosta UK Ltd.
Reflection House
Olding Road
Bury St. Edmunds
Suffolk
IP33 3TA

T +44 (0) 1284 716580
E enquiries@bosta.co.uk
<http://www.bosta.com>