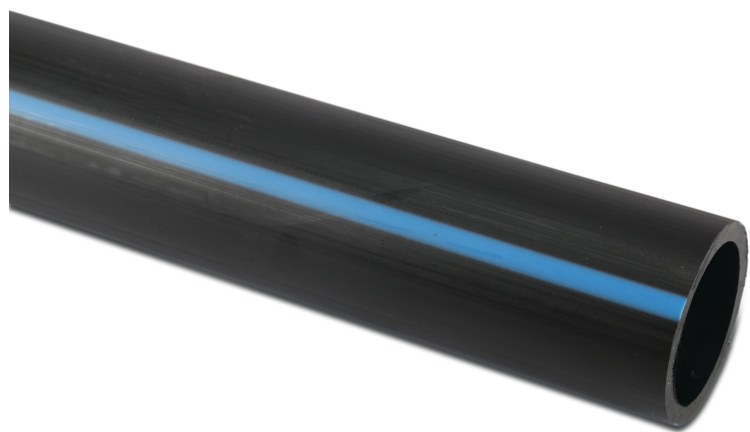


**Pressure pipe PE100 40 mm x  
2,4 mm plain SDR17 10bar  
black/blue 6m DVGW (0390601)**



# TECHNICAL SPECIFICATIONS

Colour black/blue

Material PE100

Approval DVGW

Connection plain

Length 6 m

Class SDR17

Expansion coefficient 0.2

Pressure 10 bar

Size 40 mm

Wall thickness 2,4 mm

**Last modified date: 21/02/2026**

Bosta UK Ltd.  
Reflection House  
Olding Road  
Bury St. Edmunds  
Suffolk  
IP33 3TA  
T +44 (0) 1284 716580  
E [enquiries@bosta.co.uk](mailto:enquiries@bosta.co.uk)  
<http://www.bosta.com>