

**Foras Centrifugal pump cast  
iron DN65 x 65 mm x DN50 x 50  
mm DIN flange 10bar 15,8A  
400/690VAC blue type MN50  
160 A (0920309)**



# TECHNICAL SPECIFICATIONS

Colour blue

Material cast iron

Material impeller 1 cast iron

Connection DIN flange

Voltage 400/690VAC

Max. temperature 90 °C

Minimum medium temperature -10 °C  
(continuous)

Maximum ambient temperature 40 °C

Minimum ambient temperature 0 °C

Type MN50 160 A

Output Power 10 HP

Max. head 36,7 m

Size DN65 x 65 mm x DN50 x 50 mm

Seal type H

Length 590 mm

Width 270 mm

Weight 81 kg

Power 7.5 kW

Height 340 mm

Max flow rate 78 m<sup>3</sup>/h

BEP Capacity 60

BEP Head 30

Efficiency 56 %

Press 50

Suction 65

Packaging dimensions L/W/H 627 x 287 x 408 mm

## DIMENSIONS

Cb-1 160 mm

Cl-1 100 mm

Ct-1 180 mm

G-1 212 mm

H 340 mm

H 340 mm

L 590 mm

Mc 70 mm

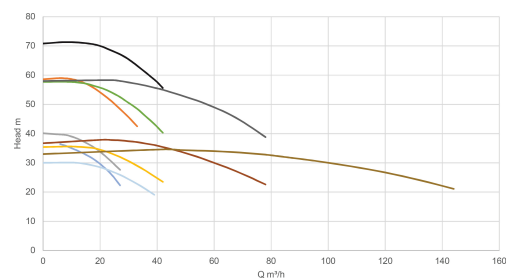
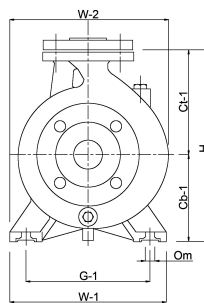
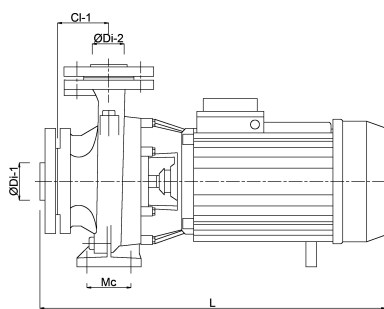
O 14 mm

W-1 265 mm

W-2 270 mm

ØDi-1 65 mm

ØDi-2 50 mm



— 920290  
— 920293  
— 920291  
— 920301  
— 920300  
— 920304  
— 920307  
— 920309  
— 920311  
— 920314

## PRODUCT INFORMATION

The pumps are supplied complete with counter flanges with female thread.  
Mechanical seal.  
Maximum water temperature 90°C.

**Last modified date: 19/05/2026**

Bosta UK Ltd.  
Reflection House  
Olding Road  
Bury St. Edmunds  
Suffolk  
IP33 3TA

T +44 (0) 1284 716580  
E [enquiries@bosta.co.uk](mailto:enquiries@bosta.co.uk)  
<http://www.bosta.com>