

**Jet pump stainless steel 304 1"  
female thread 3,2A 230VAC  
blue AJ 50/60 type with  
pressure switch (7031129)**



# TECHNICAL SPECIFICATIONS

Colour	blue
Type	with pressure switch
Material	stainless steel 304
Pump body	stainless steel 304
Material impeller 1	noryl
Model	AJ 50/60
Connection	female thread
Voltage	230VAC
Max. temperature	40 °C
Power	1.1 kW
MWC	50
Ampere	3,2 A
Max flow rate	3.6 m <sup>3</sup> /h
Press	1 "
Maximum ambient temperature 40 °C	
Suction	1 "
Size	1"

BEP Capacity 2.4

BEP Head 31

PORlh 19

PORhh 50

PORlq 0.6

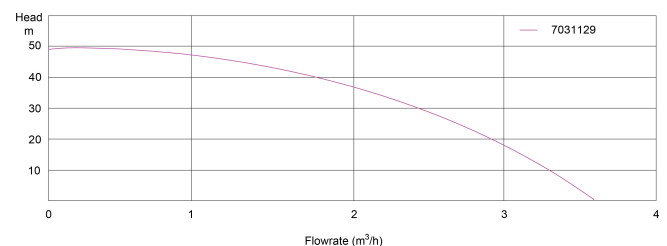
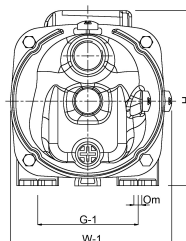
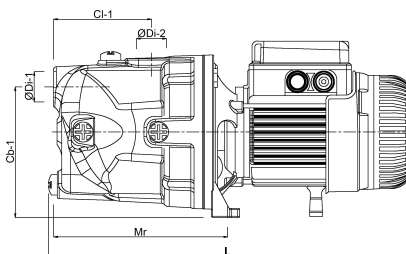
PORhq 3.6

## DIMENSIONS

L 370 mm

H 210 mm

W 200 mm



## PRODUCT INFORMATION

Single-stage self-priming centrifugal surface pump equipped with the Venturi tube system for increased suction capacity, designed for pumping of clean cold water from own intakes and for increasing pressure. Sections of pump body and shaft that come in contact with water are made of stainless steel (INOX design). The pump has a power cable with a plug. The pump motor is

provided with thermal protection. Application: Supply of water to houses, holiday houses, allotments and gardens. When combined with pressure tanks, the pumps can be used for single- and multi-family residential housing, in industrial applications and for irrigation purposes.

**Last modified date: 08/11/2025**

Bosta UK Ltd.  
Reflection House  
Olding Road  
Bury St. Edmunds  
Suffolk  
IP33 3TA  
T +44 (0) 1284 716580  
E [enquiries@bosta.co.uk](mailto:enquiries@bosta.co.uk)  
<http://www.bosta.com>