

**Foras Centrifugal pump cast  
iron DN65 x 65 mm x DN40 x 40  
mm DIN flange 10bar 9,2A  
400/690VAC blue type MN40  
160 A (0920301)**



**FOROS**  
WATER PUMPS

# TECHNICAL SPECIFICATIONS

Colour blue

Material cast iron

Material impeller 1 cast iron

Connection DIN flange

Voltage 400/690VAC

Max. temperature 90 °C

Minimum medium temperature -10 °C  
(continuous)

Maximum ambient temperature 40 °C

Minimum ambient temperature 0 °C

Type MN40 160 A

Output Power 5,5 HP

Max. head 35,4 m

Size DN65 x 65 mm x DN40 x 40 mm

Seal type H

Length 500 mm

Width 245 mm

Weight 56.5 kg

Power 4 kW

Height 292 mm

Max flow rate 42 m<sup>3</sup>/h

BEP Capacity 37

BEP Head 27

Efficiency 56 %

Press 40

Suction 65

Packaging dimensions L/W/H 602 x 263 x 395 mm

## DIMENSIONS

Cb-1 132 mm

Cl-1 80 mm

Ct-1 160 mm

G-1 190 mm

H 292 mm

H 292 mm

L 500 mm

Mc 70 mm

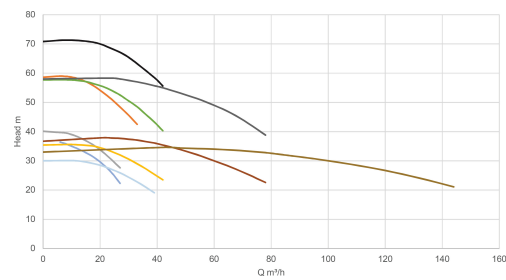
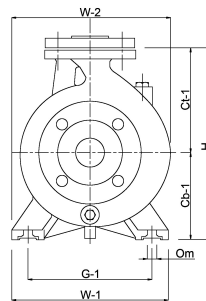
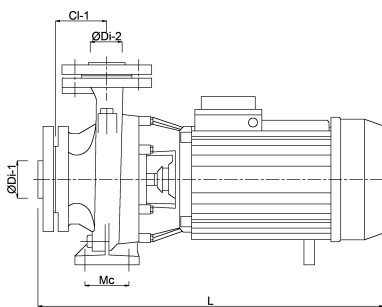
O 14 mm

W-1 240 mm

W-2 245 mm

ØDi-1 65 mm

ØDi-2 40 mm



- 920290
- 920293
- 920291
- 920301
- 920300
- 920304
- 920307
- 920309
- 920311
- 920314

## PRODUCT INFORMATION

The pumps are supplied complete with counter flanges with female thread.  
Mechanical seal.  
Maximum water temperature 90°C.

**Last modified date: 19/05/2026**

Bosta UK Ltd.  
Reflection House  
Olding Road  
Bury St. Edmunds  
Suffolk  
IP33 3TA

T +44 (0) 1284 716580  
E [enquiries@bosta.co.uk](mailto:enquiries@bosta.co.uk)  
<http://www.bosta.com>