

**Jet pump stainless steel 304 1"
female thread 3,2A 230VAC
blue type AJ 50/60 (7031128)**



TECHNICAL SPECIFICATIONS

Colour	blue
Type	AJ 50/60
Material	stainless steel 304
Pump body	stainless steel 304
Material impeller 1	noryl
Connection	female thread
Voltage	230VAC
Max. temperature	40 °C
Power	1.1 kW
MWC	50
Ampere	3,2 A
Max flow rate	3.6 m ³ /h
Press	1 "
Maximum ambient temperature 40 °C	
Suction	1 "
Size	1"
BEP Capacity	2.4

BEP Head	31
----------	----

PORlh	19
-------	----

PORhh	50
-------	----

PORlq	0.6
-------	-----

PORhq	3.6
-------	-----

DIMENSIONS

L	370 mm
---	--------

H	210 mm
---	--------

W	200 mm
---	--------

L	370 mm
---	--------

W-1	200 mm
-----	--------

ØDi-1	1 "
-------	-----

ØDi-2	1 "
-------	-----

O	10 mm
---	-------

Cb-1	160 mm
------	--------

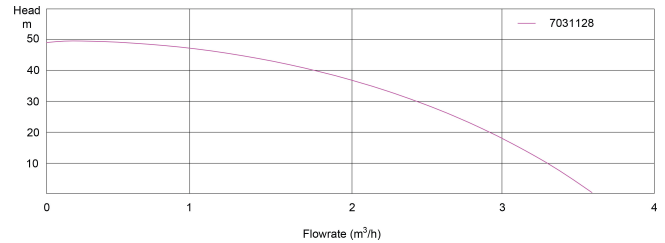
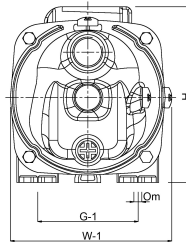
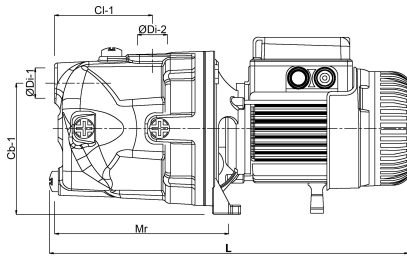
G-1	145 mm
-----	--------

Cl-1	85 mm
------	-------

Mr	170 mm
----	--------

H

290 mm



PRODUCT INFORMATION

Single-stage self-priming centrifugal surface pump equipped with the Venturi tube system for increased suction capacity, designed for pumping of clean cold water from own intakes and for increasing pressure. Sections of pump body and shaft that come in contact with water are made of stainless steel (INOX design). The pump has a power cable with a plug. The pump motor is provided with thermal protection. Application: Supply of water to houses, holiday houses, allotments and gardens. When combined with pressure tanks, the pumps can be used for single- and multi-family residential housing, in industrial applications and for irrigation purposes.

Last modified date: 08/11/2025

Bosta UK Ltd.
 Reflection House
 Olding Road
 Bury St. Edmunds
 Suffolk
 IP33 3TA
 T +44 (0) 1284 716580
 E enquiries@bosta.co.uk
<http://www.bosta.com>