

**Foras Centrifugal pump cast
iron DN65 x 65 mm x DN40 x 40
mm DIN flange 10bar 7,4A
400/690VAC blue type MN40
160 B (0920300)**



FORAS
WATER PUMPS

TECHNICAL SPECIFICATIONS

Colour blue

Material cast iron

Material impeller 1 cast iron

Connection DIN flange

Voltage 400/690VAC

Max. temperature 90 °C

Minimum medium temperature -10 °C
(continuous)

Maximum ambient temperature 40 °C

Minimum ambient temperature 0 °C

Type MN40 160 B

Output Power 4 HP

Max. head 30 m

Size DN65 x 65 mm x DN40 x 40 mm

Seal type H

Length 500 mm

Width 245 mm

Weight 52 kg

Power 3 kW

Height 292 mm

Max flow rate 36 m³/h

BEP Capacity 31

BEP Head 24

Efficiency 56 %

Press 40

Suction 65

Packaging dimensions L/W/H 551 x 250 x 341 mm

DIMENSIONS

Cb-1 132 mm

Cl-1 80 mm

Ct-1 160 mm

G-1 190 mm

H 292 mm

H 292 mm

L 500 mm

Mc 70 mm

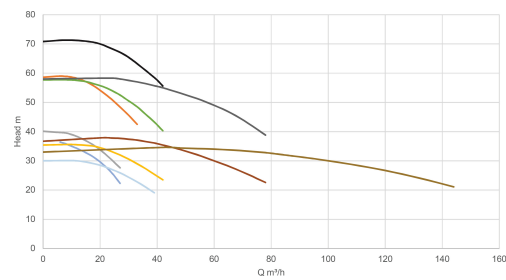
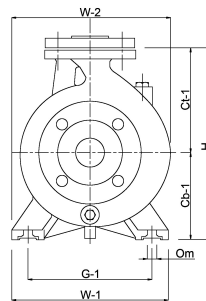
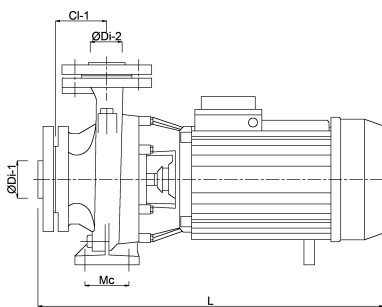
O 14 mm

W-1 240 mm

W-2 245 mm

ØDi-1 65 mm

ØDi-2 40 mm



- 920290
- 920293
- 920291
- 920301
- 920300
- 920304
- 920307
- 920309
- 920311
- 920314

PRODUCT INFORMATION

The pumps are supplied complete with counter flanges with female thread.
Mechanical seal.
Maximum water temperature 90°C.

Last modified date: 19/05/2026

Bosta UK Ltd.
Reflection House
Olding Road
Bury St. Edmunds
Suffolk
IP33 3TA

T +44 (0) 1284 716580
E enquiries@bosta.co.uk
<http://www.bosta.com>