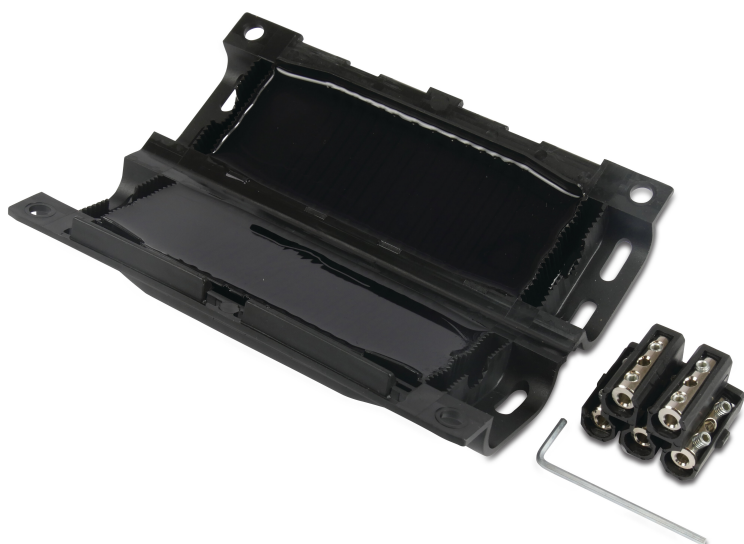


# Gel connector for cable NYY 3 x 1,5 until NYY 5 x 2,5 PP type GTQ 6 (7033949)



# TECHNICAL SPECIFICATIONS

Type	GTQ 6
Material	PP
Temperature range	-40°C - 140°C
IP value	IP68

## PRODUCT INFORMATION

Gel-filled moulded shell with double seal and 5-pole terminal block provides a weather and moisture-resistant connection and branch sleeve for cables up to 5 x 2.5 mm<sup>2</sup>. Can be installed outdoors, in the ground, in water, in cable ducts and indoors. Moulded shell is made of impact-resistant, UV-resistant, halogen-free PP with double seal, and is weather and moisture-resistant. Temperature-resistant from -40°C to +80°C and tested to DIN EN 50393. No special tools required. The unit can be opened again. Quick and easy installation. Ready for immediate use. Included in the box: - Gel-filled moulded shell with double seal - 5-pole terminal block for cables up to 2.5 mm<sup>2</sup>, incl. suitable Allen key - Cable tie to securely close the moulded shell - Assembly instructions

**Last modified date: 10/02/2026**

Bosta UK Ltd.  
Reflection House  
Olding Road  
Bury St. Edmunds  
Suffolk  
IP33 3TA  
T +44 (0) 1284 716580  
E [enquiries@bosta.co.uk](mailto:enquiries@bosta.co.uk)  
<http://www.bosta.com>