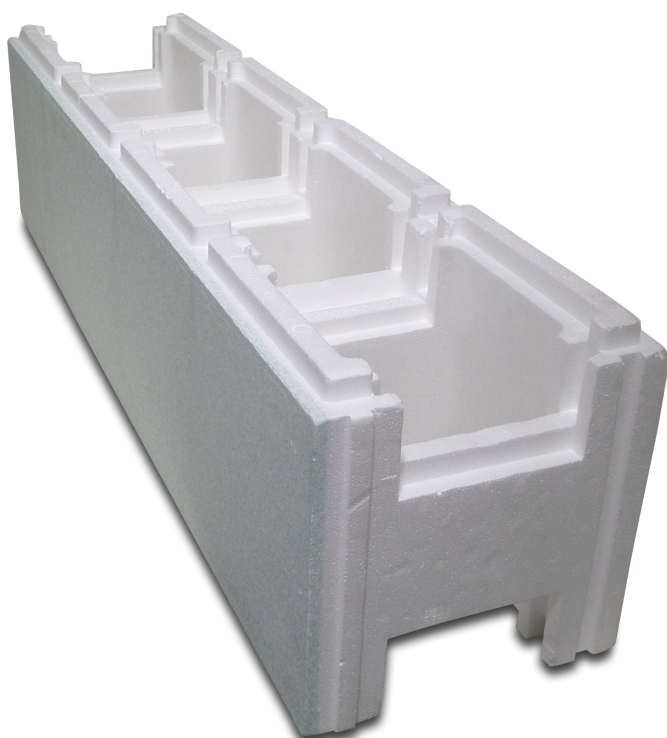


**Pool building brick**  
**EPS25/EPS80 250 mm white**  
**1m (7017092)**



# TECHNICAL SPECIFICATIONS

Colour	white
Material	EPS25/EPS80
Size	250 mm
Length	1 m
Width	250 mm

## PRODUCT INFORMATION

Build and shape your pool with Pool building bricks!

A simple and quick solution for building an insulated swimming pool with smooth and precise walls.

The EPS25 pool building bricks are coated with 10mm of EPS80 for the inner side of the pool. After that you can apply the liner of your choice to give your pool that special look.

- Strong, well-built pool
  - Perfectly insulated
  - Fast building method, saves up to 60% in labour time
  - Max. heat transfer coefficient U is 0,414 Wm<sup>2</sup>/K
- 
- Volume concrete to fill one Pool building brick 250 x 250 x 1.000 is  $\pm 0,033\text{m}^3$  (Circa 0,132m<sup>3</sup> concrete per 1m<sup>2</sup> wall)
  - Volume concrete to fill one Pool building brick 500 x 250 x 1.250 is  $\pm 0,083\text{m}^3$  (Circa 0,133m<sup>3</sup> concrete per 1m<sup>2</sup> wall)

**Last modified date: 09/11/2025**

Bosta UK Ltd.  
Reflection House  
Olding Road  
Bury St. Edmunds  
Suffolk  
IP33 3TA  
T +44 (0) 1284 716580  
E [enquiries@bosta.co.uk](mailto:enquiries@bosta.co.uk)  
<http://www.bosta.com>