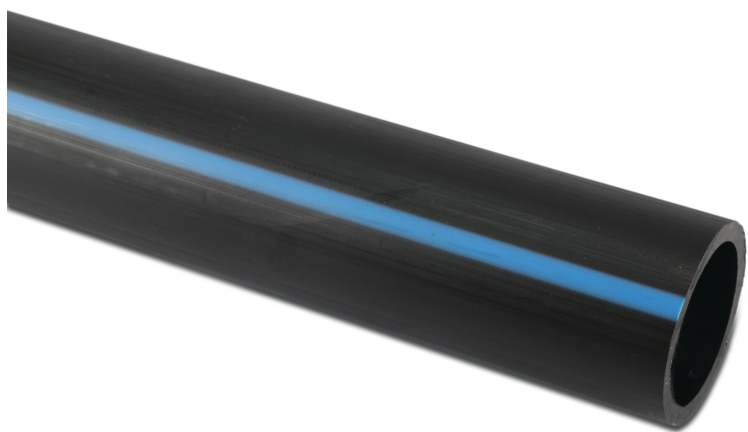


**Pressure pipe PE100 50 mm x
3,0 mm plain SDR17 10bar
black/blue 6m DVGW (0390602)**



TECHNICAL SPECIFICATIONS

Colour black/blue

Material PE100

Approval DVGW

Connection plain

Length 6 m

Class SDR17

Expansion coefficient 0.2

Pressure 10 bar

Size 50 mm

Wall thickness 3,0 mm

Last modified date: 10/10/2025

Bosta UK Ltd.
Reflection House
Olding Road
Bury St. Edmunds
Suffolk
IP33 3TA
T +44 (0) 1284 716580
E enquiries@bosta.co.uk
<http://www.bosta.com>