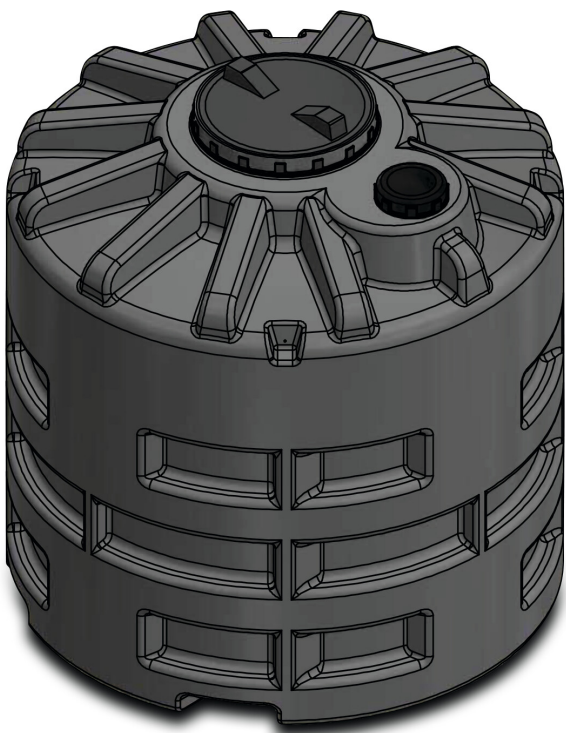


Elbi Tank LDPE black 4000ltr type CUV underground (7040035)



TECHNICAL SPECIFICATIONS

Colour	black
--------	-------

Type	CUV
------	-----

Material	LDPE
----------	------

Type	underground
------	-------------

Content	4000 ltr
---------	----------

Diameter	1650 mm
----------	---------

Height	2380 mm
--------	---------

Cover	455 mm
-------	--------

PRODUCT INFORMATION

Polyethylene tanks for underground use only for the following applications: • storage of water • rainwater recovery • wastewater treatment systems and plants

Last modified date: 24/02/2026

Bosta UK Ltd.
Reflection House
Olding Road
Bury St. Edmunds
Suffolk
IP33 3TA
T +44 (0) 1284 716580
E enquiries@bosta.co.uk

<http://www.bosta.com>