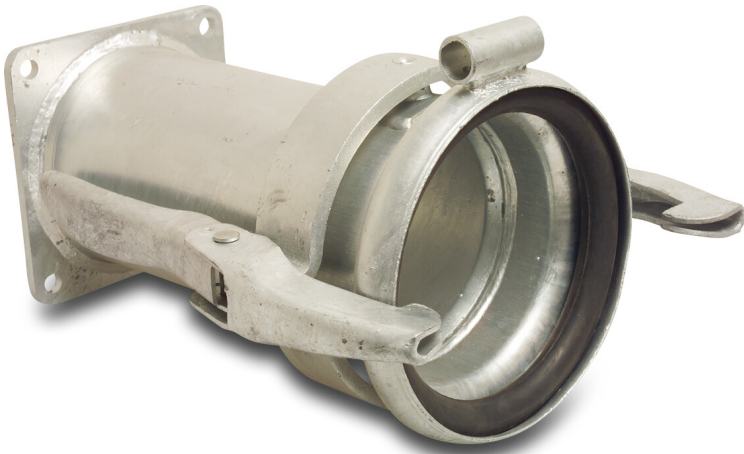


**Quick coupler adaptor steel
galvanised 159 mm x DN150
female part Perrot x DIN flange
PN10/16 type Perrot (0218397)**



TECHNICAL SPECIFICATIONS

Type	Perrot
Material	steel
Surface treatment	galvanised
Size	159 mm x DN150
Connection	female part Perrot x DIN flange
Flange	PN10/16
PCD	240 mm
Holes	8

DIMENSIONS

PCD	240 mm
-----	--------

Last modified date: 20/02/2026

Bosta UK Ltd.
Reflection House
Olding Road
Bury St. Edmunds
Suffolk
IP33 3TA
T +44 (0) 1284 716580
E enquiries@bosta.co.uk
<http://www.bosta.com>