

**Foras Centrifugal pump cast  
iron DN50 x 50 mm x DN32 x 32  
mm DIN flange 10bar 9,4A  
400/690VAC blue type MN32  
200 C (0920291)**



**FORAS**  
WATER PUMPS

# TECHNICAL SPECIFICATIONS

Colour blue

Material cast iron

Material impeller 1 cast iron

Connection DIN flange

Voltage 400/690VAC

Max. temperature 90 °C

Minimum medium temperature -10 °C  
(continuous)

Maximum ambient temperature 40 °C

Minimum ambient temperature 0 °C

Type MN32 200 C

Output Power 5,5 HP

Max. head 41 m

Size DN50 x 50 mm x DN32 x 32 mm

Seal type H

Length 565 mm

Width 268 mm

Weight 65.5 kg

Power 4 kW

Height 340 mm

Max flow rate 27 m<sup>3</sup>/h

BEP Capacity 22

BEP Head 32

Efficiency 53 %

Press 32

Suction 50

Packaging dimensions L/W/H 602 x 263 x 395 mm

## DIMENSIONS

Cb-1 160 mm

Cl-1 80 mm

Ct-1 180 mm

G-1 190 mm

H 340 mm

H 340 mm

L 565 mm

Mc 70 mm

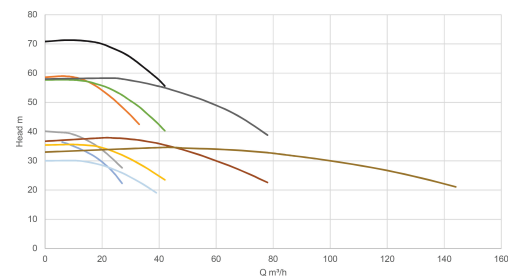
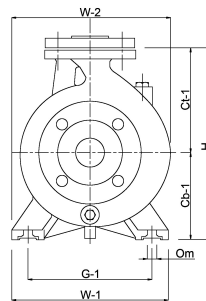
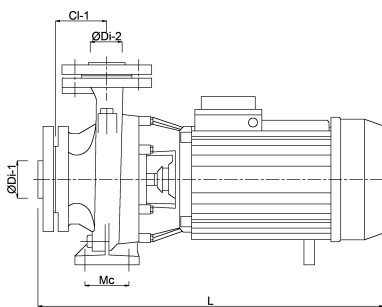
O 14 mm

W-1 240 mm

W-2 268 mm

ØDi-1 50 mm

ØDi-2 32 mm



## PRODUCT INFORMATION

The pumps are supplied complete with counter flanges with female thread.  
Mechanical seal.  
Maximum water temperature 90°C.

**Last modified date: 19/05/2026**

Bosta UK Ltd.  
Reflection House  
Olding Road  
Bury St. Edmunds  
Suffolk  
IP33 3TA

T +44 (0) 1284 716580  
E [enquiries@bosta.co.uk](mailto:enquiries@bosta.co.uk)  
<http://www.bosta.com>