

**Profec Hose tail union adaptor
brass 1/2" x 13 mm male thread
x hose tail type flat seal
(0424572)**

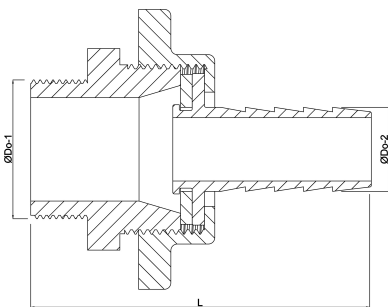


TECHNICAL SPECIFICATIONS

Type	flat seal
Material	brass
Connection	male thread x hose tail
Max. temperature	120 °C
Max. temp.	120 °C
Size	1/2" x 13 mm
Length	30,5 mm

DIMENSIONS

L	52 mm
ØDo-2	13 mm
ØDo-1	1/2 "
K-1	27 mm



Last modified date: 06/11/2025

Bosta UK Ltd.
Reflection House
Olding Road
Bury St. Edmunds
Suffolk
IP33 3TA
T +44 (0) 1284 716580
E enquiries@bosta.co.uk
<http://www.bosta.com>