

**Grundfos Variable speed  
circulation pump stainless  
steel DN32 flange 10bar 0.91A  
230VAC black/red WRAS type  
MAGNA3 32-60FN (220)  
(7039841)**



GRUNDFOS 

# TECHNICAL SPECIFICATIONS

Colour black/red

Material stainless steel

Approval WRAS

Pump body stainless steel

Material impeller 1 fibreglass-reinforced PES

Connection flange

Voltage 230VAC

Max. temperature 110 °C

Minimum medium temperature -10 °C  
(continuous)

Impellers 1

Frequency 50 Hz

Maximum ambient temperature 40 °C

Pressure 10 bar

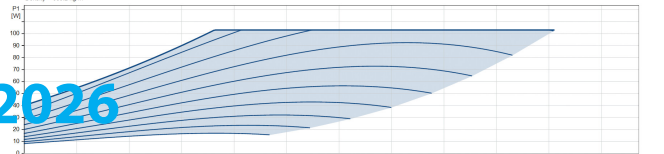
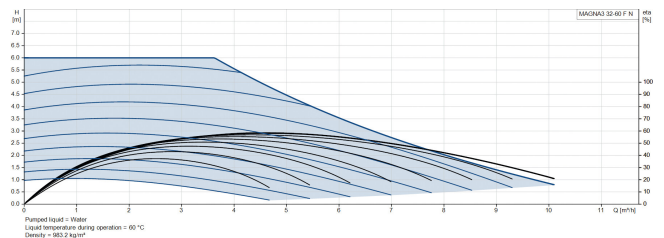
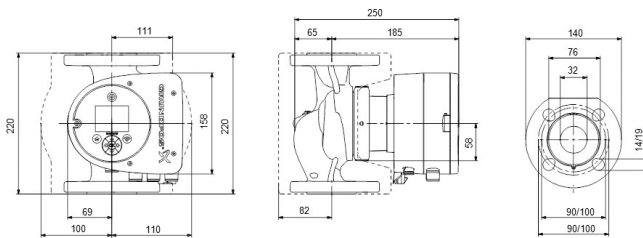
Minimum ambient temperature 0 °C

Type MAGNA3 32-60FN (220)

MWC 6 m

Size DN32

Ampere 0.91 A



**Last modified date: 09/05/2026**

Bosta UK Ltd.  
Reflection House  
Olding Road  
Bury St. Edmunds  
Suffolk  
IP33 3TA  
T +44 (0) 1284 716580  
E [enquiries@bosta.co.uk](mailto:enquiries@bosta.co.uk)  
<http://www.bosta.com>